

## **Picnic tables**

- Proposed picnic table locations (map attached)
  - Yellow – three picnic tables by the Leap – two of the tables will be moved north in the same area
  - Blue – two picnic tables by the Discovery Tower area – one will move west closer to the walking path; the other picnic table under the tree will remain in place
  - Red – three picnic tables in the area for the high elements will be relocated southeast to areas closer to the walking path

## **Storage containers**

- Two 20 feet by 10 feet containers are needed to store Rec Park and Outward Bound equipment such as ladders, harnesses, and helmets.
- Proposed storage container locations (map attached)
  - Area A – Parallel to Mansell St. and north of ropes course
    - Observation
      - The storage containers would be visible from Mansell St.
      - The storage containers could be covered with wood cladding, mural art welcoming visitors to McLaren Park, perimeter shrubs to prevent people from walking up to the sides, and/or cover by planting screen vegetation.
      - Close to the 29 bus stops
      - Need secure lock process for the storage containers
    - Advantages
      - Located in the ropes course site
    - Disadvantages
      - Could be easy target for vandalism because of proximity to Mansell St. and the bus stops
      - Will block views into the park from the street
  - Area B – “Triangle area” close to Mansell St. and northeast of site
    - Observations
      - The storage containers could be angled to reduce visibility from Mansell St.
      - The storage containers could be covered with wood cladding, mural art welcoming visitors to McLaren Park, perimeter shrubs to prevent people from walking up to the sides, and/or cover by planting screen vegetation.
      - Close to the 29 bus stops
      - Need secure lock process for the storage containers
    - Advantages
      - Close to the ropes course site
      - Slightly set back from the street view
    - Disadvantages

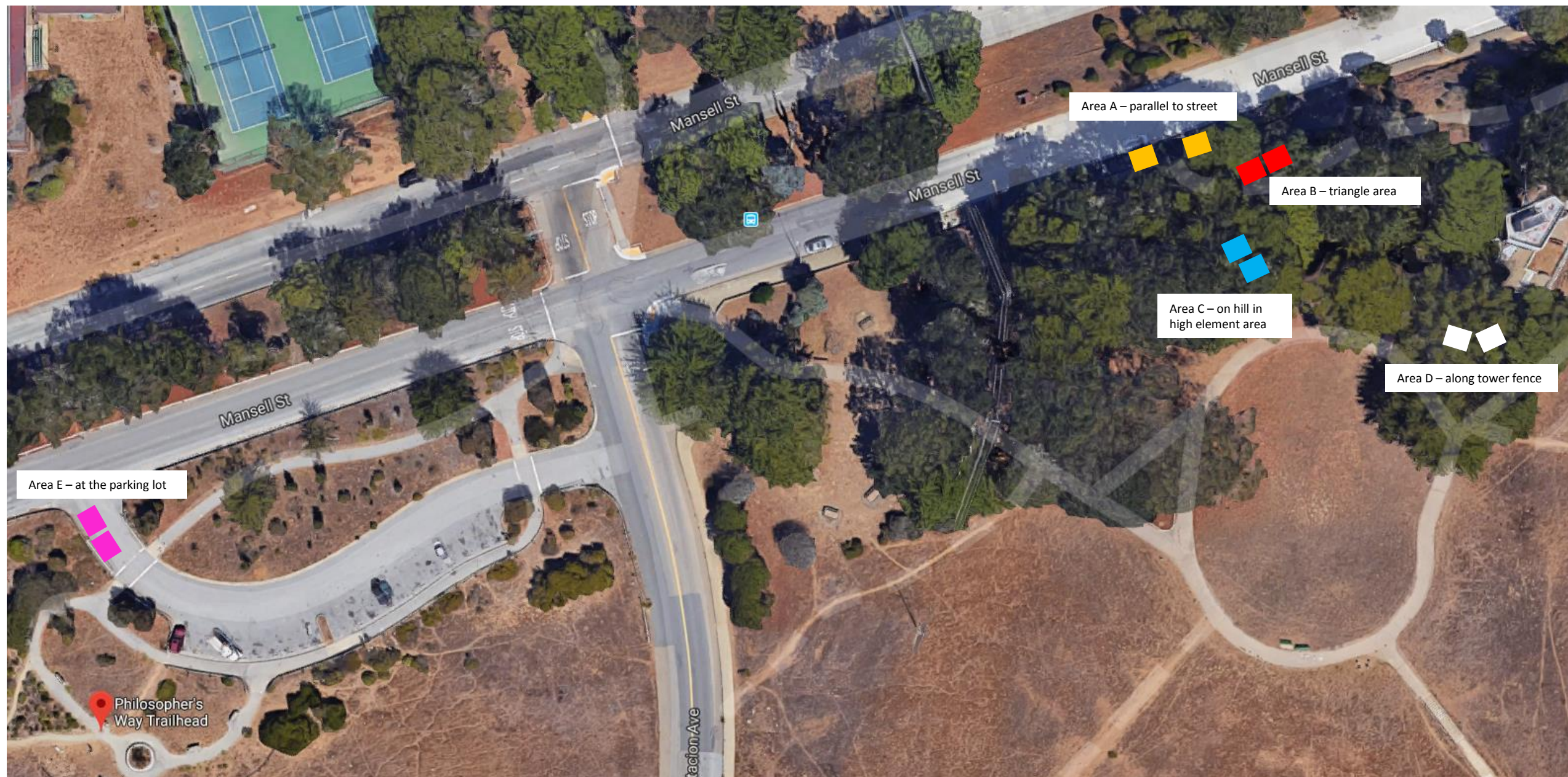
- Could be an easy target for vandalism because of proximity to Mansell St. and the bus stops
  - Will block views into the park from the street
- Area C - On hillside, east of the ropes course in the same area
  - Observations
    - The storage containers could be covered with wood cladding, mural art welcoming visitors to McLaren Park, perimeter shrubs to prevent people from walking up to the sides, and/or cover by planting screen vegetation
    - Close to the 29 bus stops
    - Need secure lock process for the storage containers
  - Advantages
    - Located in the ropes course site
    - Set back from the street view
  - Disadvantages
    - Could be an easy target for vandalism because of proximity to Mansell St. and the bus stops
    - Will block views into the park from walking path
- Area D - Against fence by the hardscape at the base of the Wilde Overlook Tower
  - Observations
    - Away from the street
    - The storage containers could be covered with wood cladding, mural art welcoming visitors to McLaren Park, perimeter shrubs to prevent people from walking up to the sides, and/or cover by planting screen vegetation
    - Need secure lock process for the storage containers
  - Advantages
    - Doesn't block park views from the street or walking path
    - Close to the ropes course site
  - Disadvantages
    - People may use the hardscape area and fence to climb to the top of the storage containers and use this space inappropriately
- Area E – parking lot at Mansell St. and Visitacion Ave.
  - Observations
    - Very prominent location
    - Location would be within the parking lot and away from picnic tables
    - The storage containers could be covered with wood cladding, mural art welcoming visitors to McLaren Park, perimeter shrubs to prevent people from walking up to the sides, and/or cover by planting screen vegetation
    - Need secure lock process for the storage containers

- Advantages
  - Close to the ropes course site
- Disadvantages
  - Very prominent and visible from Mansell St. and walking path

Proposed picnic table locations (approximate and not to scale)



Proposed storage container locations (approximate and not to scale)



Area A – parallel to street

Area B – triangle area

Area C – on hill in high element area

Area D – along tower fence

Area E – at the parking lot

Philosopher's Way Trailhead