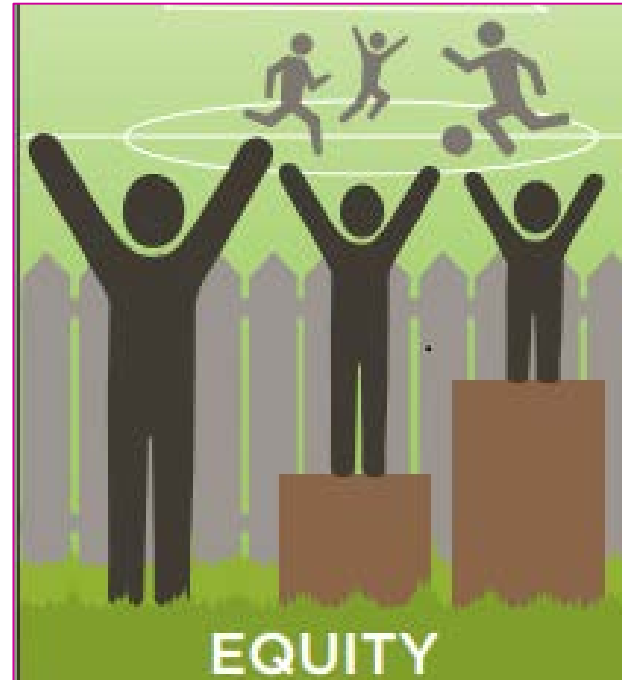


Equity Metrics: Implementing New Charter Language of Prop B



Charter Sec. 16.107(4)(h)(1) Equity Metrics. The department shall develop ... a set of equity metrics to be used to establish a baseline of existing Recreation and Park services and resources in low-income neighborhoods and disadvantaged communities, compared to services and resources available to the City as a whole.

Defining Disadvantaged Communities

As part of the State's carbon cap-and-trade system, the California Environmental Protection Agency (CalEPA) designed a tool to identify "disadvantaged communities" using a statewide standard.

This data is Open Source and is currently being used to make allocation decisions in:

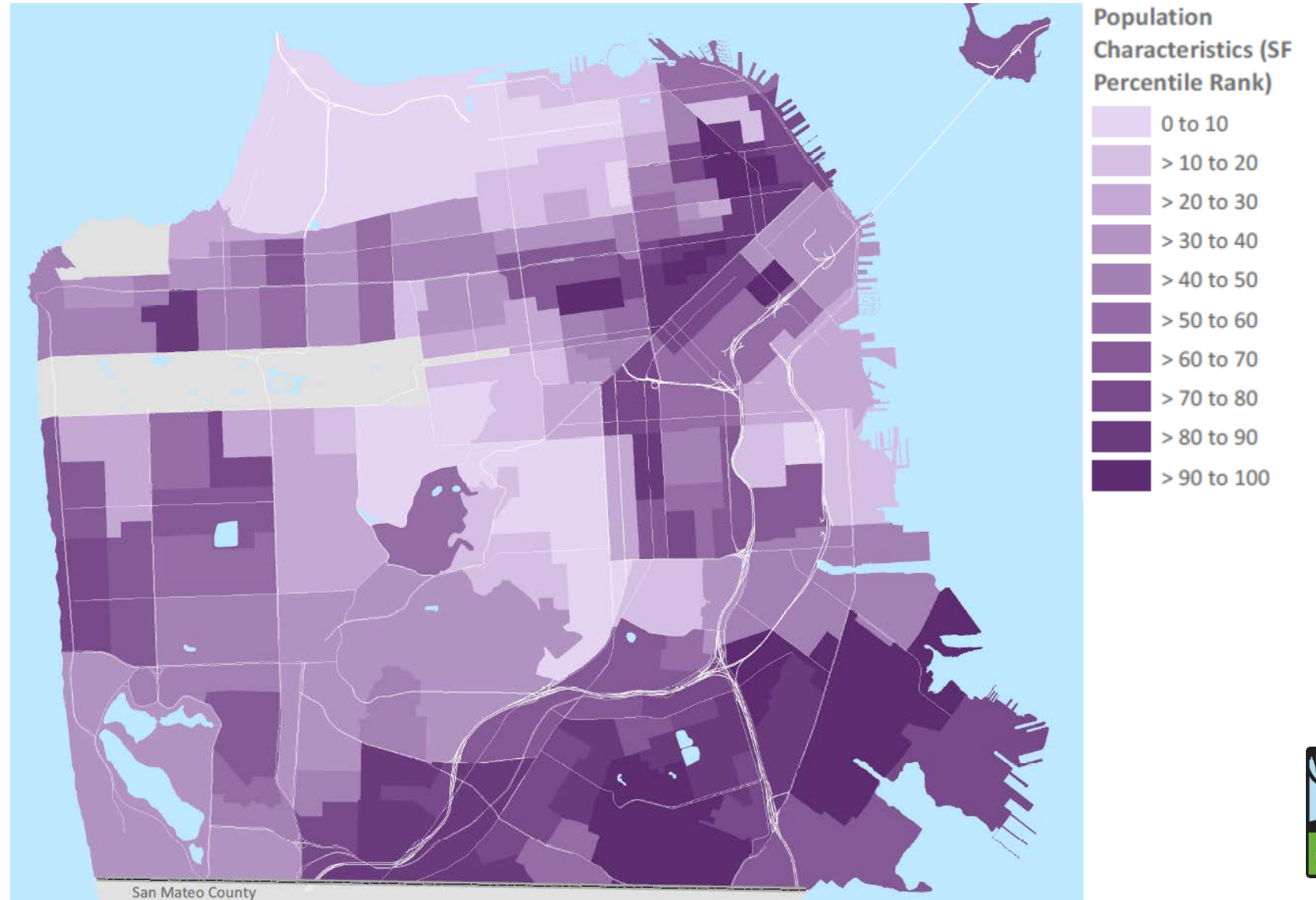
Bay Area Air Quality Management District
CA Air Resources Board
CA Dept. Community Services & Development
Caltrans
City of Davis
City of Long Beach
City of San Diego
City of Fresno
LA Metro



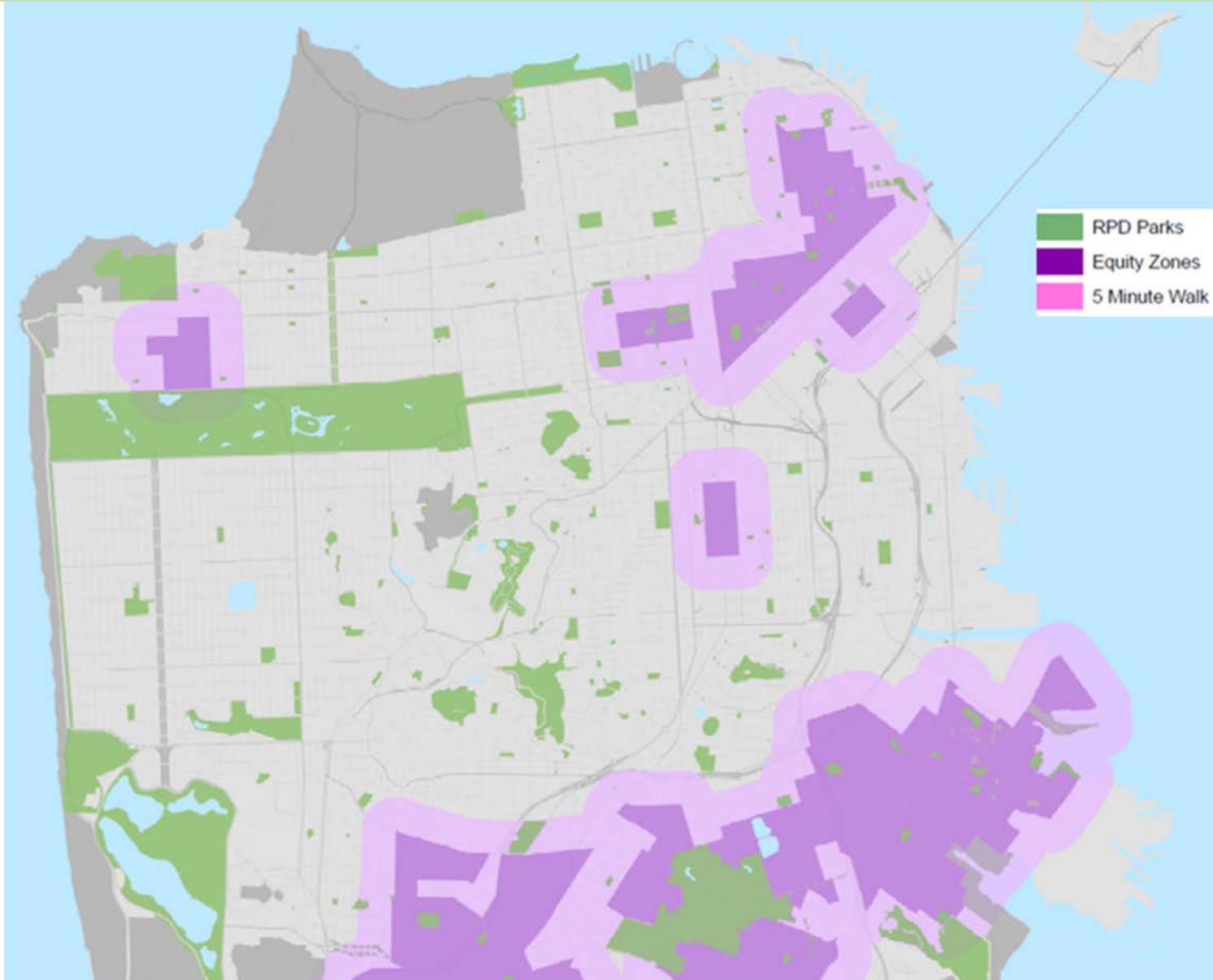
Cal-EPA Population Characteristics

Census Tracts ranked with highest incidence of:

- Age (most youth & seniors)
- Asthma
- Low Birth Weight
- Low Education
- Linguistic Isolation
- Poverty
- Unemployment



Equity Zones



“Disadvantaged communities” are the San Francisco census tracts with the highest 20% of Cal-EPA’s Population Characteristics compared to the City as a whole, and designated as **Equity Zones**

Parks Serving the Equity Zones

Equity Zone Parks		
Adam Rodgers Park	Hamilton Playground	Mission Playground
Alamo Square	Hayes Valley Playground	Mission Recreation Center
Alice Chalmers Playground	Head & Brotherhood Mini Park	Palega Playground
Alioto Mini Park	Herz Playground	Palou & Phelps Park
Balboa Park	Hilltop Park	Parque Ninos Unidos
Bay View Park	Hooker Alley Community Garden	Patricia's Green in Hayes Valley
Bay View Playground	Ina Coolbrith Park	Portsmouth Square
Broadway Tunnel East Mini Park	India Basin/Shoreline Park	Randolph & Bright Mini Park
Brooks Park	Japantown Peace Plaza	Raymond Kimball Playground
Brotherhood & Chester Mini Park	Jefferson Square	Ridgetop Plaza
Buchanan Street Mall	Joe DiMaggio Playground	Selby & Palou Mini Park
Cabrillo Playground	John McLaren Park	Sgt. John Macaulay Park
Cayuga & Lamartine Mini Park	Jose Coronado Playground	Silver Terrace Playground
Cayuga Playground	Joseph L. Alioto Performing Arts Piazza	SOMA Rec Center
Chesnut & Kearny Open Space	Joseph Lee Recreation Center	South Park
Chinese Recreation Center	Justin Herman/Embarcadero Plaza	St. Mary's Square
Collins P. Huntington Park	Kelloch & Velasco Mini Park	Telegraph Hill/Pioneer Park
Crocker Amazon Playground	Kidpower Park	Tenderloin Recreation Center
Dearborn Community Garden	Lakeview & Ashton Mini Park	Turk & Hyde Mini Park
DuPont Tennis Courts	LeConte Mini Park	Union Square
Excelsior Playground	Lessing & Sears Mini Park	Victoria Manalo Draves Park
Father Alfred E. Boeddeker Park	Lincoln Park	Visitation Valley Greenway
Ferry Park	Louis Sutter Playground	Visitation Valley Playground
Fillmore & Turk Mini Park	Margaret S. Hayward Playground	Washington Square
Fulton Playground	Maritime Plaza	Willie "Woo Woo" Wong Playground
Gilman Playground	Michelangelo Playground	Woh Hei Yuen
Golden Gate & Steiner Mini Park	Minnie Lovie Ward Recreation Center	Youngblood-Coleman Playground



Measuring Equity

What data can be used to measure equity?

Data that's available and reliable:

- GIS information
- Park Scores
- TMA maintenance and repair workorders
- AAO Capital Budget
- Program and permit data in CLASS
- Department records for volunteers, Mobile Recreation, active clubhouses, scholarships

Categories of data that speak to our mission:

- Geographic access
- Recreation for everyone
- Clean and well-maintained parks
- Investment in parks



Equity Metrics

Demographics		Equity Zone	City-wide
	Population ¹	163,906	805,235
	Population	20%	100%
Metrics			
Access	Acres of park ² /1,000 people	4.9	3.8
Maintenance	Park Scores ³	83.1	85.2
	Maintenance and repair requests ⁴ completed	82%	86%
Investment	\$ Capital Investment ⁵ /1,000 people	\$55,868	\$19,147
	Hours of Volunteer Service ⁶	TBD	TBD
Recreation	Hours of Recreational Resources ⁷ /1,000 people	483	290
	Scholarships Granted ⁸ /1,000	4.9	2.8



Next Steps

Sept-October 2016	FY17-21 Strategic Plan approved by Commission
December 2016	FY17-18 Operations Plan approved by Commission
January 2017	FY17-18 Capital Plan approved by Commission
February 2017	FY17-18 Budget approved by Commission